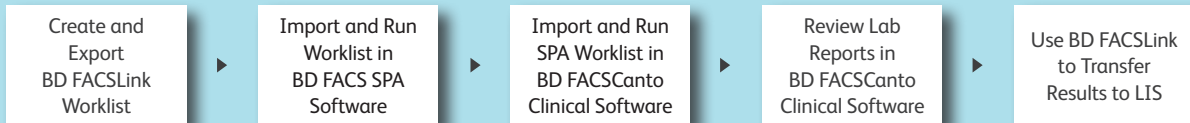


# Quick Reference Guide for Using BD Panels with BD FACS™ SPA and BD FACSCanto™ Clinical Software and the BD FACSLink™ LIS Interface

This guide contains instructions for using BD panels in BD FACSCanto™ Clinical software\* (v2.2 and later) and BD FACS™ SPA software\* (v3.0.1 and later) with the BD FACSLink™ laboratory information system (LIS) interface.

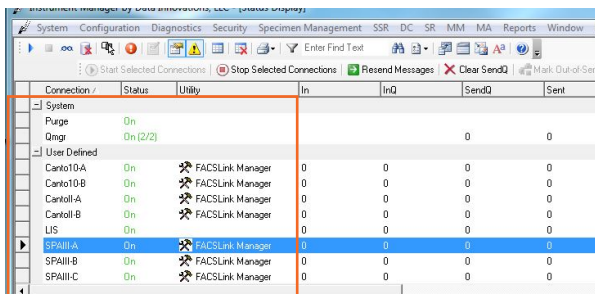
## Workflow Overview



## Creating and Exporting a Worklist in BD FACSLink (Instrument Manager) Software

- 1 Start Instrument Manager software and log in.
- 2 Open BD FACSLink by clicking **FACSLink Manager** under the **Utility** tab for the appropriate connection.

Enter your connection here \_\_\_\_\_

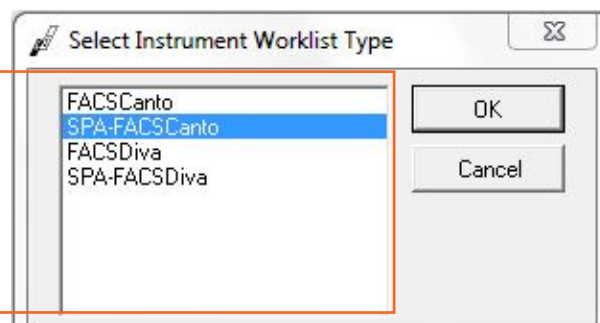


Select the **SPA** connection you want.

- 3 Create a new worklist.



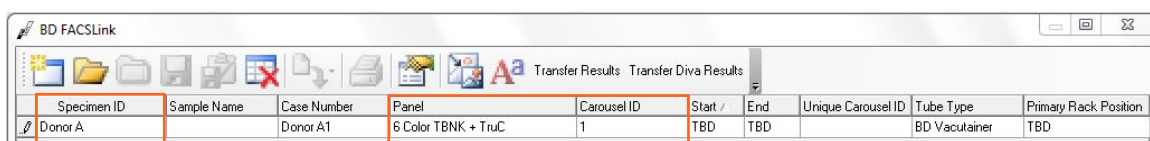
Click the **New Worklist** button.



Select the **SPA-FACSCanto** worklist type. Then click **OK**.

\* BD FACSCanto and BD FACSCanto II flow cytometers and BD FACS Sample Prep Assistant II and III (SPA II and III) are for In Vitro Diagnostic Use.

- 4 Enter or scan in the **Specimen ID**, then press **Tab**. Select the **Panel**, if needed, and enter the **Carousel ID**, then press **Enter**.



Specimen ID	Sample Name	Case Number	Panel	Carousel ID	Start	End	Unique Carousel ID	Tube Type	Primary Rack Position
Donor A		Donor A1	6 Color TBNK + TruC	1	TBD	TBD		BD Vacutainer	TBD

- 5 Export and save the worklist.



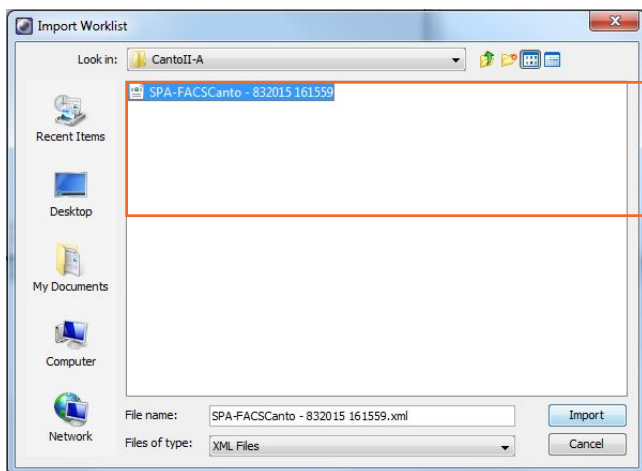
Click the **Export** button on the tool bar. Select **Export Entire Worklist**. Name and save the worklist to the appropriate location on the (S:) drive.

Enter your location here \_\_\_\_\_

- 6 Exit BD FACSLink software.

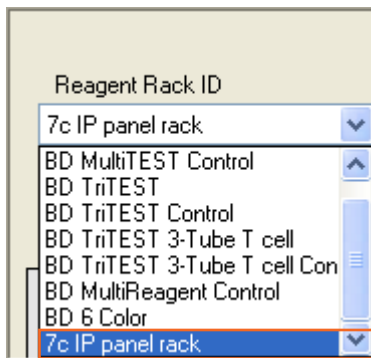
## Importing and Running a BD FACSLink Worklist in SPA Software

- 1 Start SPA software and log in.  
2 Select **File > Open Prep Worklist**.



Open the location on the (S:) drive where you saved the worklist previously. Select the worklist and then click **Open**.

- 3 Select the reagent rack ID you want.

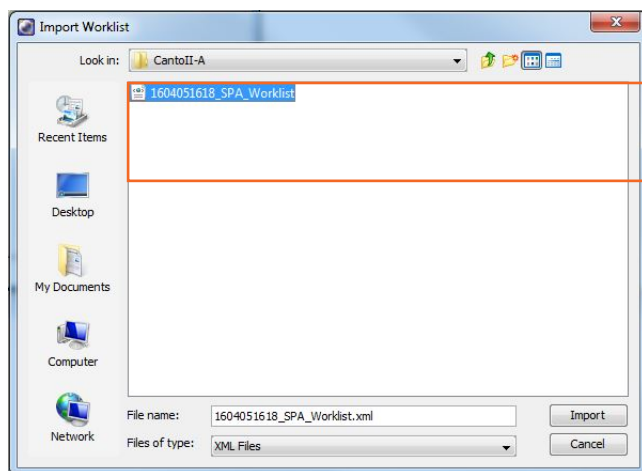


- 4 Click **Run**.

- 5 A dialog will open prompting you to save the worklist. Name and save the worklist to the appropriate location on the (P:) drive.  
Enter your location here \_\_\_\_\_
- 6 Close the worklist and perform the SPA shutdown procedure, as needed.

## Importing and Running a SPA Worklist in BD FACSCanto Clinical Software

- 1 Start BD FACSCanto Clinical software and log in, if needed.
- 2 Select **File > Import SPA Worklist**.



Open the location on the (P:) drive where you saved the worklist previously. Select the worklist and then click **Open**.

- 3 Verify that the information in the worklist is correct.
- 4 Run the worklist.

## Reviewing Lab Reports in BD FACSCanto Clinical Software

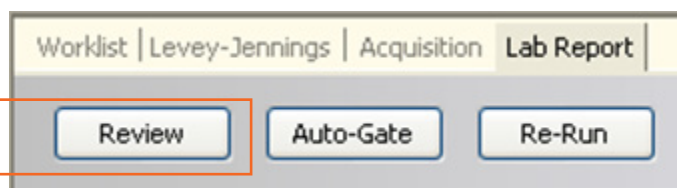
- 1 View the lab report for each entry in the worklist.

Double-click the **Status** field for an entry in the worklist to view the lab report for that entry.

Status	FCS File
OK	Multicheck control00...
OK	Multicheck low contro...

- 2 Inspect the plots, gates, and QC messages on the lab report.
- 3 If needed, manually adjust the gates.
- 4 When all reports have been reviewed, append a virtual signature to the reviewed reports.

Click the **Review** button and select the appropriate reviewer.



## Releasing Results to the LIS

- 1 Start Instrument Manager software and log in.
- 2 Open BD FACSLink by clicking **FACSLink Manager** under the **Utility** tab for the appropriate connection.

Enter your connection here \_\_\_\_\_

- 3 Display the **BD FACSLink** window and transfer the results.



Click the **Transfer Results** button, select the statistics file to transfer, and click **Open**.

- 4 Exit the software.

This material is for training purposes.

BD FACSCanto™ BD FACSCanto II, BD FACS Sample Prep Assistant II and III (SPA II and III), BD FACS™ SPA software are CE marked For In Vitro Diagnostic Use.  
23-15335-01

BD Biosciences, 2350 Qume Drive, San Jose, CA 95131, USA

**[bdbiosciences.com](http://bdbiosciences.com)**

BD, the BD Logo, FACS, FACSCanto, and FACSLink are trademarks of Becton, Dickinson and Company or its affiliates.  
©2020 BD. All rights reserved.

